

AccuSizer® 3.6.1.0 Software Release Notification

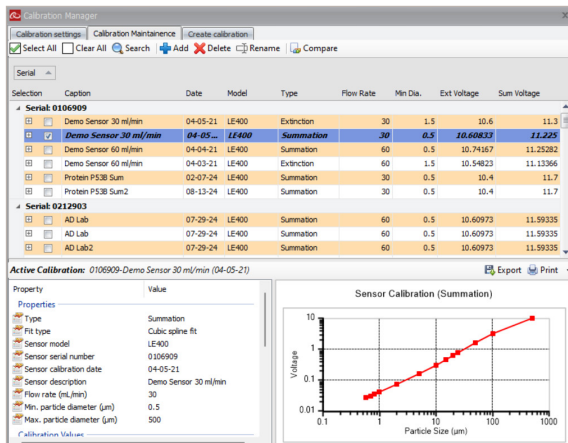
AccuSizer® SPOS Systems

In February of 2026 Entegris released AccuSizer software version 3.1.6.0 that includes several new features (some that were partially released in version 3.1.5.0):

- Calibration Manager: Organize, search, rename, and compare calibration curves
- Protocol import/export: Import and export protocols to facilitate method transfer
- Analysis manager import/export: Import and export analyses regions to facilitate method transfer
- Hotkey functionality: Single keystrokes execute common functions
- Custom logo manager: Easily change the logo shown on report results
- Improvement in reporting capabilities: Many additional Features and capabilities in reports
- General improvements and bug fixes

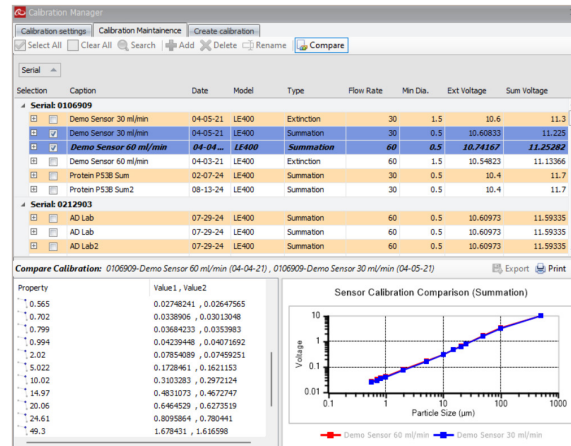
CALIBRATION MANAGER

Click the Calibration icon to open the Calibration Manager window. The Calibration settings and Create calibration tabs remain the same. The new Calibration Maintenance window on the middle tab is shown below.



Note that the various calibration curves on this computer are now automatically organized by serial number and date (of creation). Click on any curve and the properties and curve are displayed.

Click on any two curves and Compare to view the tables and curves to contrast the two calibration tables and curves.

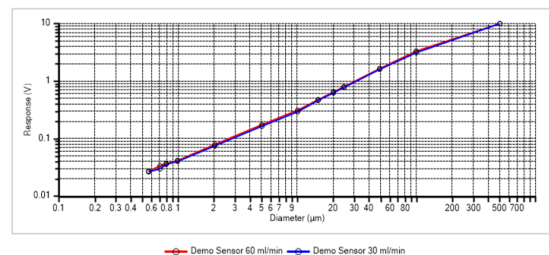


Click Print to generate a comparison report like the one below.

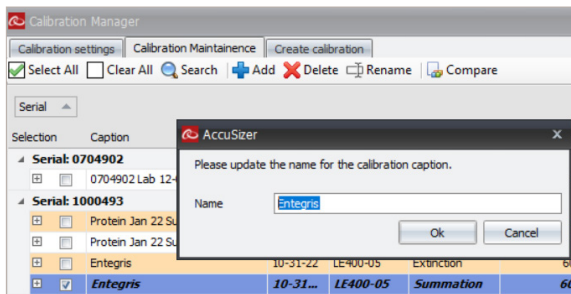
File name:	0106909_040421_860.SNS	0106909_040521_830.SNS
Caption:	Demo Sensor 60 ml/min	Demo Sensor 30 ml/min
Date:	04-04-21	04-05-21
Model:	LE600	LE600
Serial number:	0106909	0106909
Flow rate:	60.0 mL/min	30.0 mL/min
Fit type:	Cubic spline fit	Cubic spline fit
Table type:	Summation	Summation
Extinction voltage:	10.7 V	10.6 V
Scattering voltage:	11.3 V	11.2 V

Demo Sensor 60 ml/min		Demo Sensor 30 ml/min	
Diameter (µm)	Response (V)	Diameter (µm)	Response (V)
0.565	0.0275	0.565	0.0265
0.702	0.0339	0.702	0.0301
0.799	0.0368	0.799	0.0354
0.994	0.0424	0.994	0.0407
2.020	0.0785	2.020	0.0746
5.022	0.1728	5.022	0.1621
10.020	0.3103	10.020	0.2972
14.970	0.4831	14.970	0.4673
20.060	0.6465	20.060	0.6274
24.610	0.8096	24.610	0.7804
49.300	1.6784	49.300	1.6166
100.000	3.3368	100.000	3.1655
499.000	9.9990	499.000	9.9990

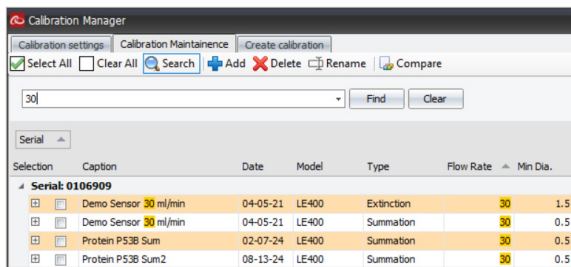
Sensor Calibration Comparison (Summation)



Select a calibration curve and click Rename to give a new name to a calibration curve.

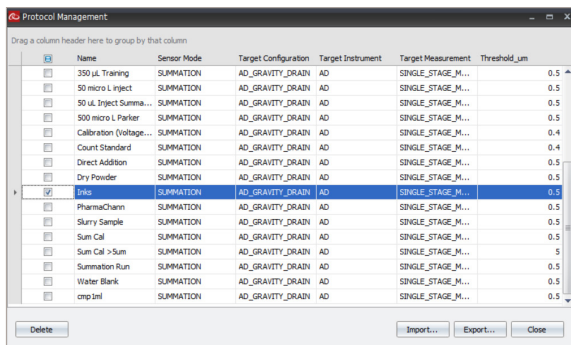


Click Search and enter a word or phrase to find a specific calibration curve.



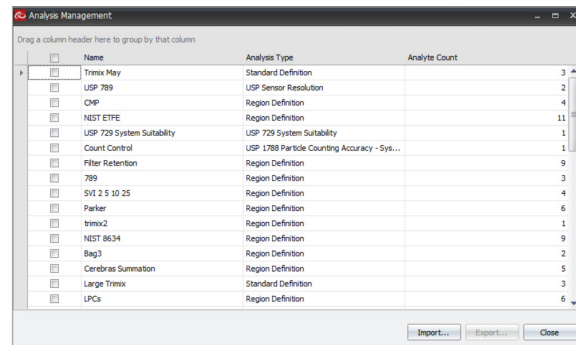
PROTOCOL MANAGER

Protocols can be imported and exported using the Protocol Management functions. Click Sample, Protocol Manager to open the window below. Select the desired protocol then click on Delete or Export. Click Import and then select the protocol file (*.ple) to be imported.



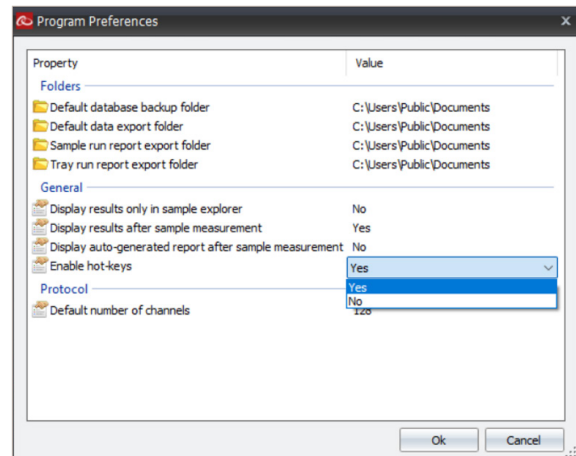
ANALYSIS MANAGER

The Analysis Definitions can be imported and exported using the Analysis Management tool. Click Reports, Analysis Manager and the window below will appear. Click on the desired Name, export to create an AccuSizer Analysis export file (*.ale). Click Import and search for the *.ale file to be imported.



HOTKEYS

Click Options, Program Preferences, Click Yes next to Enable hotkeys, then OK to enable these functions.



Here are the hotkeys and what they do:

[R]: Start a run. This is the same functionality as clicking the Run button.

[Shift-R] Start a single-sample run. This is the same functionality as clicking the Run sample button.

[P]: Open the Protocol window. This is the same functionality as clicking the Protocol button.

[S]: Open the Settings window. This is the same functionality as clicking the Settings button.

[M]: Open the Maintenance window. This is the same functionality as clicking the Maintenance button.

[C]: Open the Calibration window. This is the same functionality as clicking the Calibration button.

[A]: Open the Analyses window. This is the same functionality as clicking the Analyses button.

[Escape]: Aborts the current run; Closes an open dialog window; Disables anything that is enabled in the maintenance window (only if the maintenance window is open).

[W]: Cycle between different graph weightings.

[U]: Cycle between different (alternative) graph weightings.

[Control-P]: Print report.

[Shift - D]: Opens Maintenance window and toggles Fast Drain. This is the same as clicking the Fast Drain toggle switch.

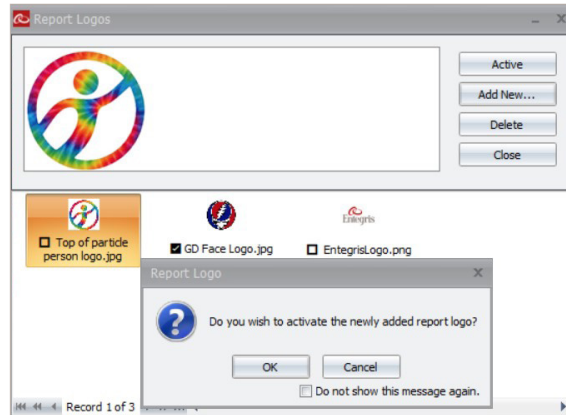
[Shift - <] (this can also be thought of as the left-caret <): Opens Maintenance window and toggles Flush. This is the same as clicking the Flush Chamber toggle switch.

[Shift - >] (this can also be thought of as the right-caret >): Opens Maintenance window and toggles Fill. This is the same as clicking the Fill Chamber toggle switch.

Note: Within Program Preferences is also where you can select the folder to save run reports. This is a good idea because the default is C:\Users\Public Documents, not an easy to remember file location.

CUSTOM REPORT LOGOS

You can now easily change the logo that appears on the AccuSizer reports. Click Reports, Manage Report Logos, Add New, select the desired image file, OK to activate the newly added report logo, and then Close. The new logo will now appear on all reports.



IMPROVED REPORTING CAPABILITIES

Several new options are available for reporting results including:

- Added option to automatically open auto-generated reports after sample runs
- Added absolute volume option to particle count monitor
- Added area and volume weighted statistics to full report
- Added initial auto naming for runs and reports
- Added print report after sample measurement and tray run
- Added option to turn on/off channel data for full report
- Added 50 micron criteria test to USP 789 report
- Updated ordering of colors in color preferences

MISCELLANEOUS

- Moved particle count monitor to the main window
- Added injection volume override to data calculations within sample explorer for manual injection measurements only
- Added audit log wrapping for comments field
- Added select all/clear all buttons for project import/export
- Added measurement limit notification report tag
- Added additional user permissions for new features
- Updated instrument selection name for A2000
- Updated AD calculations for metered drain

FOR MORE INFORMATION

Please call your Regional Customer Service Center today to learn what Entegris can do for you. Visit entegris.com and select the [Contact Us](#) link to find the customer service center nearest you.

TERMS AND CONDITIONS OF SALE

All purchases are subject to Entegris' Terms and Conditions of Sale. To view and print this information, visit entegris.com and select the [Terms & Conditions](#) link in the footer.



Corporate Headquarters

129 Concord Road
Billerica, MA 01821
USA

Customer Service

Tel +1 952 556 4181
Fax +1 952 556 8022
Toll Free 800 394 4083

Entegris®, the Entegris Rings Design®, and other product names are trademarks of Entegris, Inc. as listed on entegris.com/trademarks. All third-party product names, logos, and company names are trademarks or registered trademarks of their respective owners. Use of them does not imply any affiliation, sponsorship, or endorsement by the trademark owner.

©2026 Entegris, Inc. | All rights reserved. | Printed in the USA | 7127-14488ENT-0626